

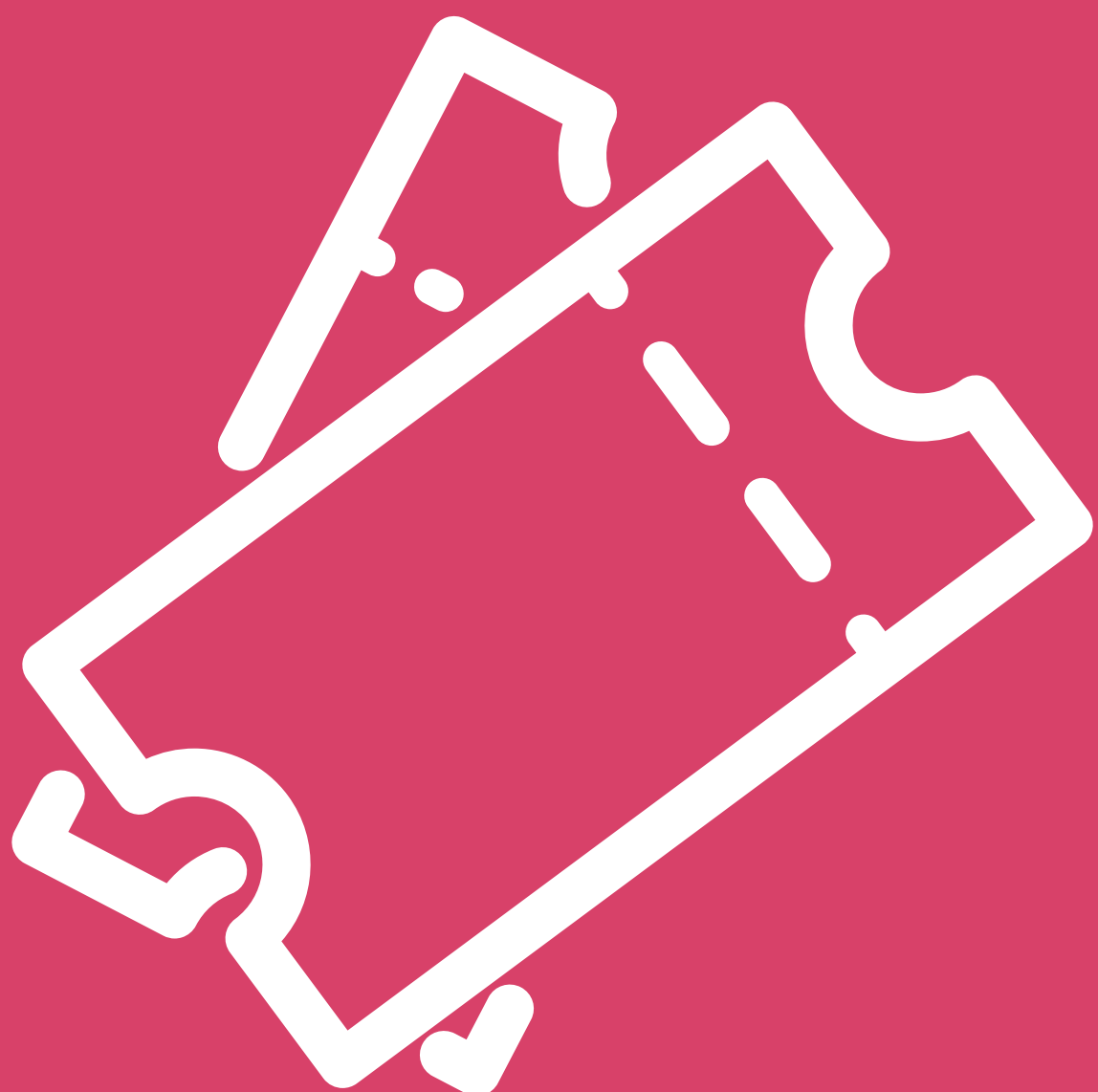
# Ticketing >>> Information.

## Pricing structures.

Our aim is to keep our show as accessible as possible, and so ALL tickets are priced under \$60, representing excellent value for a 2-hour performance (plus interval). Tickets in regional locations are \$49.95, with performances in Kangaroo Island and Victor Harbor at \$39.95 due to the absence of our 9-piece band.

## Where do I buy?

You can buy your tickets online at FringeTix, over the phone on 1300 621 255, or at an Adelaide Fringe Box Office. Tickets to shows in Renmark, Whyalla, Port Pirie and Noarlunga can also be purchased through Country Arts, on their website, at the venue, or over the phone.



## Admission.

All tickets in the season are General Admission. Doors open 30 minutes prior to the start of the performance.

## Where do I buy?

We want everyone to experience the magic of the 1960s and are committed to ensuring that audiences of all abilities can enjoy our show. For access requirements, we encourage you to converse with the venue, and call FringeTix on their accessibility booking line (08 8100 2089) to chat through how we can assist you. Alternatively, you can email [the60four@outlook.com](mailto:the60four@outlook.com).

## Refunds & exchanges.

The refund and exchange policies of our ticketing partners apply. Please see the terms and conditions on their websites. Please note that The 60 Four are unable to facilitate ticketing refunds or exchanges.

Enjoy the  
<<< show.